

Quick Installation Guide

USB2.0 1-Port Multi-Functional Printer Server

Model # AMPS230



Package Content:

- 1-Port MFP Server
- Power Adapter
- Ethernet Cable
- Driver & Utility CD
- Quick Installation Guide

Section 1

This Quick Installation Guide only provides basic instructions. For detailed information on using this product, please refer to the User's Manual on the supplied CD.

Connecting the Printer Server

WARNING: Only a USB printer may be connected to the USB port of the Printer Server. Connecting any other USB device to the Printer Server may damage the Printer Server.

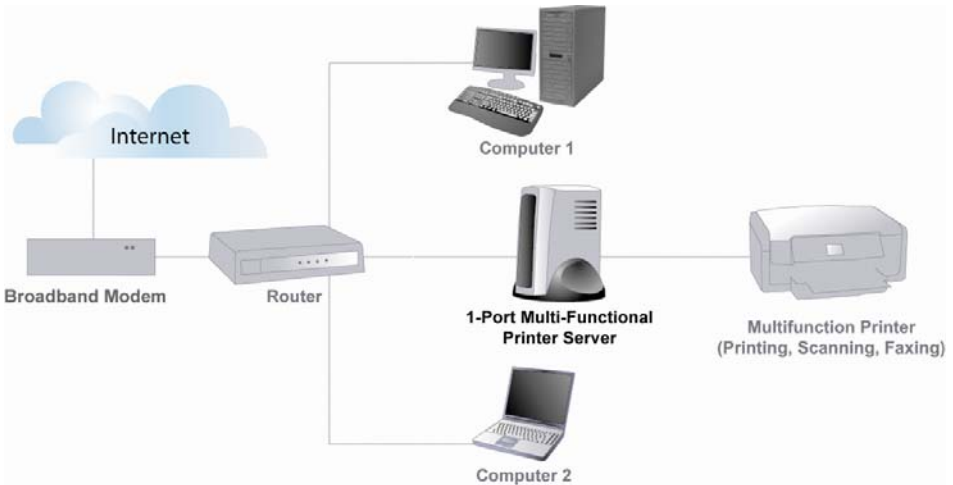
Note: Before connecting the Printer Server, you must install the printer driver on each computer you plan to use with the printer. Make sure that you are able to print, scan, and fax from each with your multi-functional printer directly connected to your computer(s).

Step 1 Power down the printer and the printer server.

Step 2 Connect one end of a networking cable to your router, then connect the other end to the Ethernet port on the back of the print server.

Step 3 Connect the USB cable coming from your printer into the USB port on the printer server.

Step 4 Turn on the printer. Once the printer is powered on, connect the print server's power adapter to an electrical outlet.



Section 2

Installing the PS Software

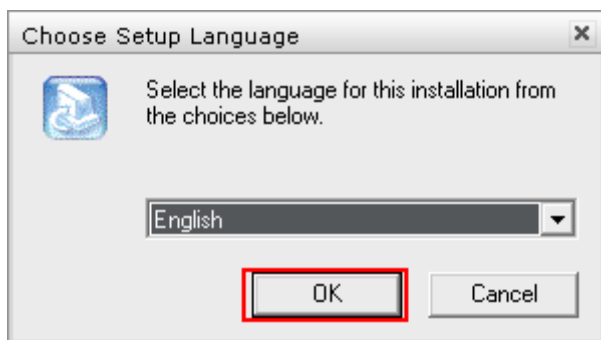
Note: The PS Software must be installed on **all computers** you plan to use with the print server.

Step 1 Insert the Utility CD into your CD-ROM drive. When the autorun screen appears, select **Install PS Software** from the menu.

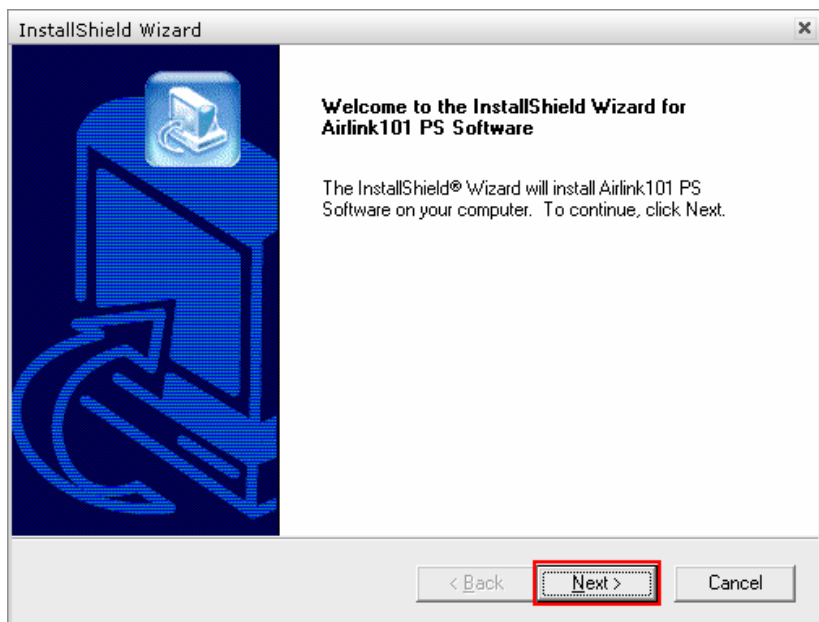


Note: If the autorun window does not appear automatically, go to Start -> Run and type **D:\Utility\Setup.exe** (where **D** is the letter of your CD-ROM drive) and click **OK**.

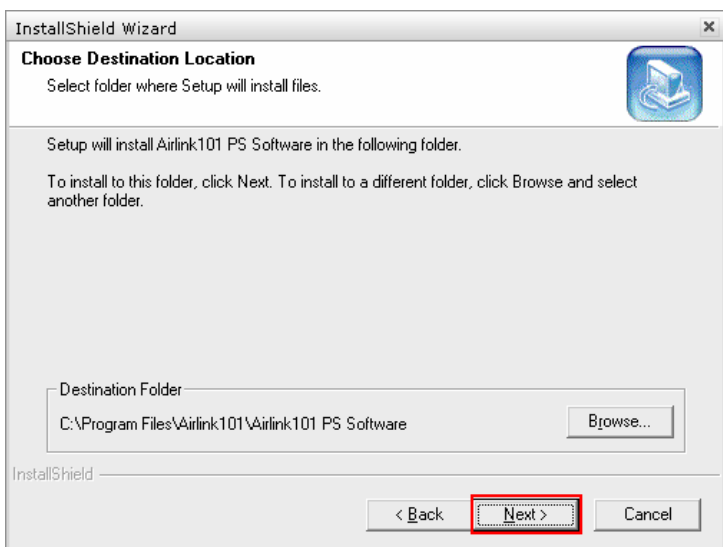
Step 2 Select your setup language and click **OK**.



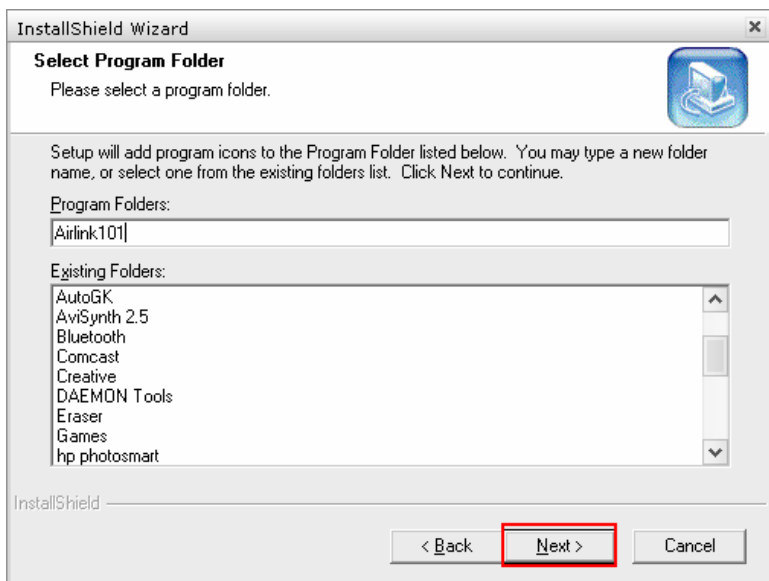
Step 3 Click **Next** at the welcome screen.



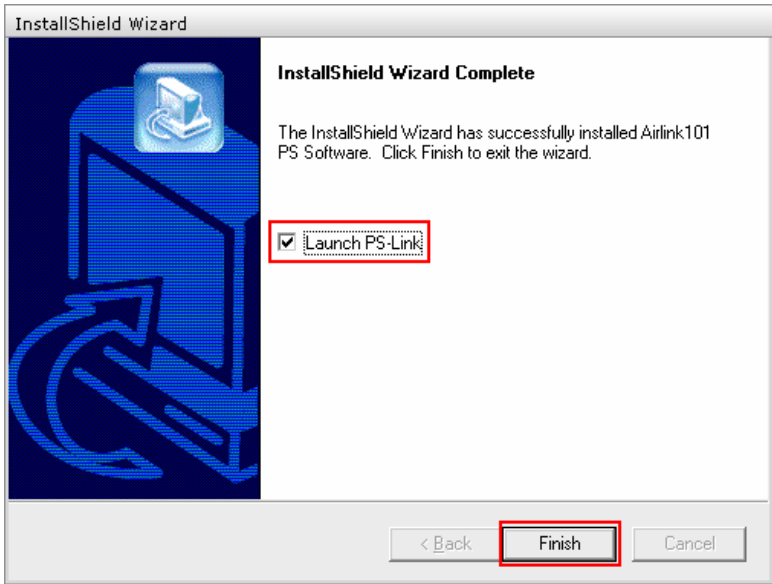
Step 4 Click **Next** at the **Choose Destination Location** screen.



Step 5 Click **Next** at the **Select Program Folder**.



Step 6 Once the installation is complete, make sure that the **Launch PS-Link** box is checked and click **Finish**.

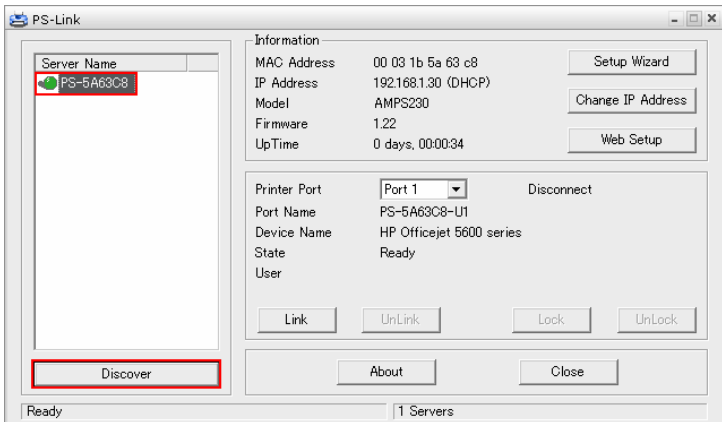


Section 3

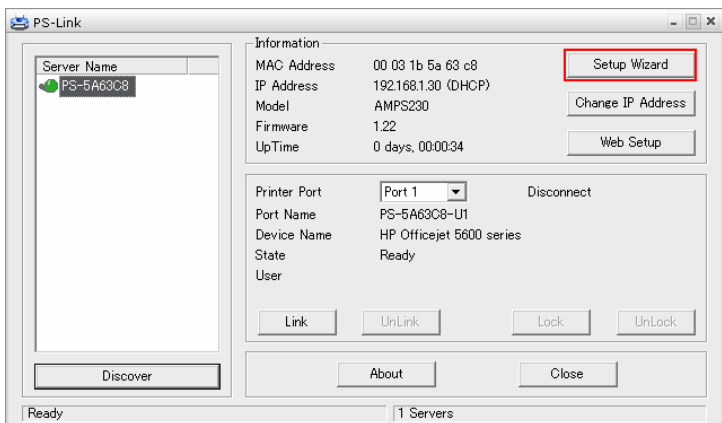
Configuring the Printer Server

Note: The following steps only need to be performed **one time** from one computer.

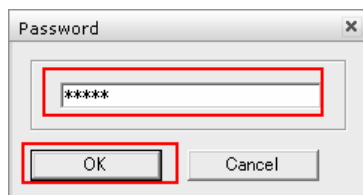
Step 1 Click the **Discover** button and your printer should show up under **Server Name**. If your print server does not show up, check all power and network cable connections to the printer. You may also need to disable any software firewalls you have on your computer.



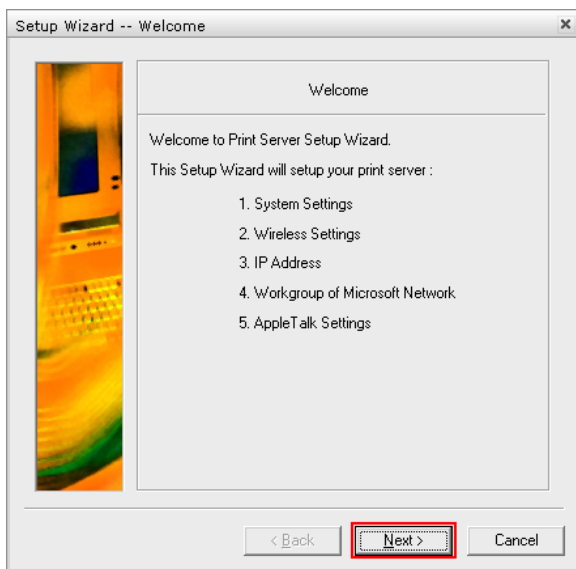
Step 2 Once the printer server appears in the **Server Name** box, click on it. You should see your printer next to **Device name**. Click on the **Setup Wizard** button to configure the printer server.



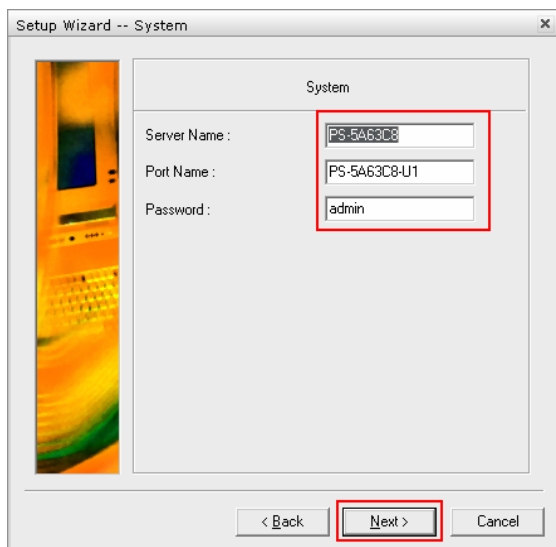
Step 3 A password box will appear. The default password is **admin**. Enter it and click **OK**.



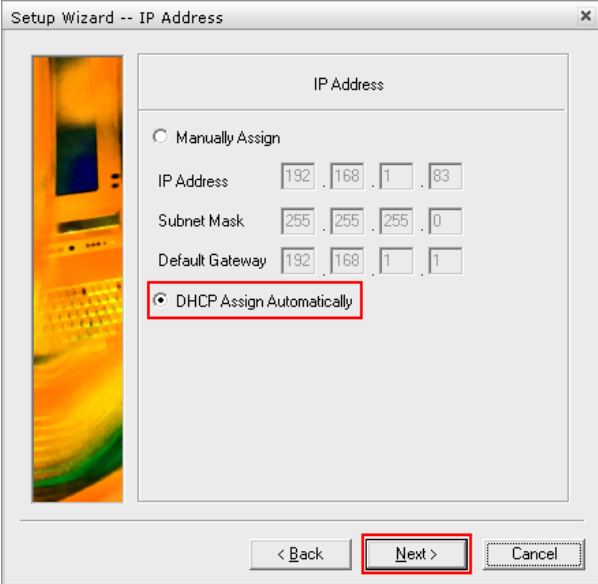
Step 4 Click **Next** at the welcome screen.



Step 5 At the **System** screen you can change the **Server Name**, **Port Name**, and **Password**. Click **Next** after making the desired changes. If you do not have a specific Server Name, Port Name, or Password that you would like to use, click **Next** to accept the default settings.



Step 6 If you have a specific IP address you would like to assign to the print server, select **Manually Assign** and enter your custom settings. Otherwise, select **DHCP Assign Automatically** and click **Next**.



Setup Wizard -- IP Address

IP Address

Manually Assign

IP Address: 192 . 168 . 1 . 83

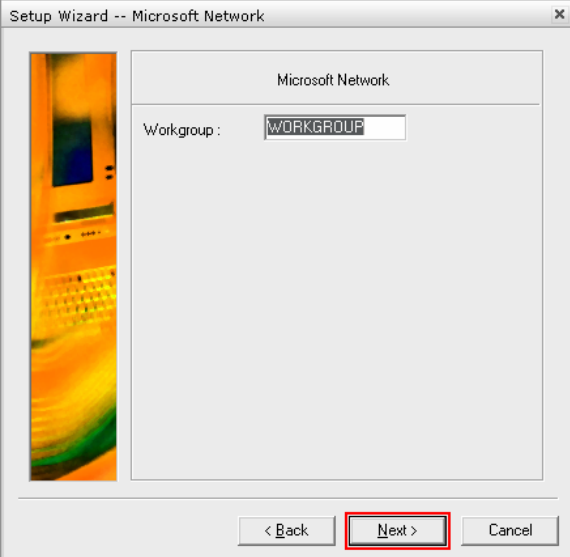
Subnet Mask: 255 . 255 . 255 . 0

Default Gateway: 192 . 168 . 1 . 1

DHCP Assign Automatically

< Back **Next >** Cancel

Step 7 If your network uses a workgroup name other than WORKGROUP, you can enter it here, or accept the default settings, and click **Next**.



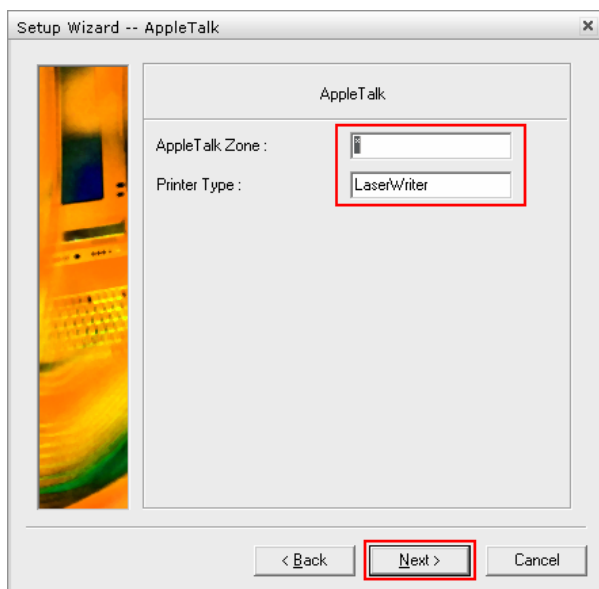
Setup Wizard -- Microsoft Network

Microsoft Network

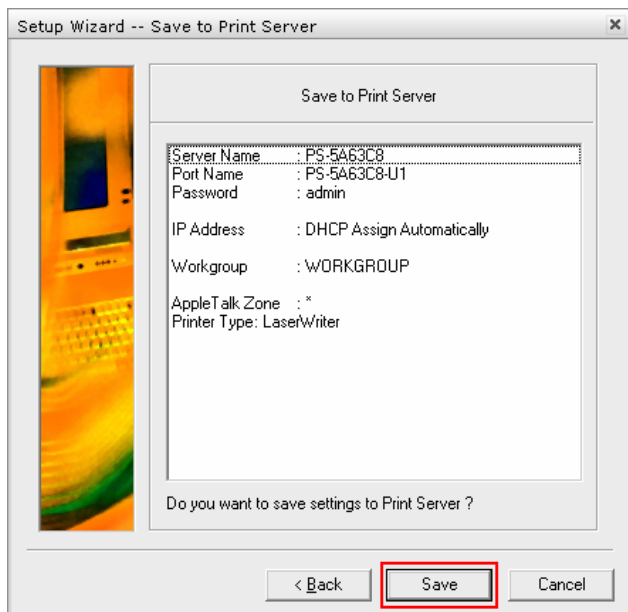
Workgroup: WORKGROUP

< Back **Next >** Cancel

Step 8 If you have specific **AppleTalk** settings, you can enter them here or accept the default settings, and click **Next**.



Step 9 Click **Save** to save the changes to your print server.



Section 4

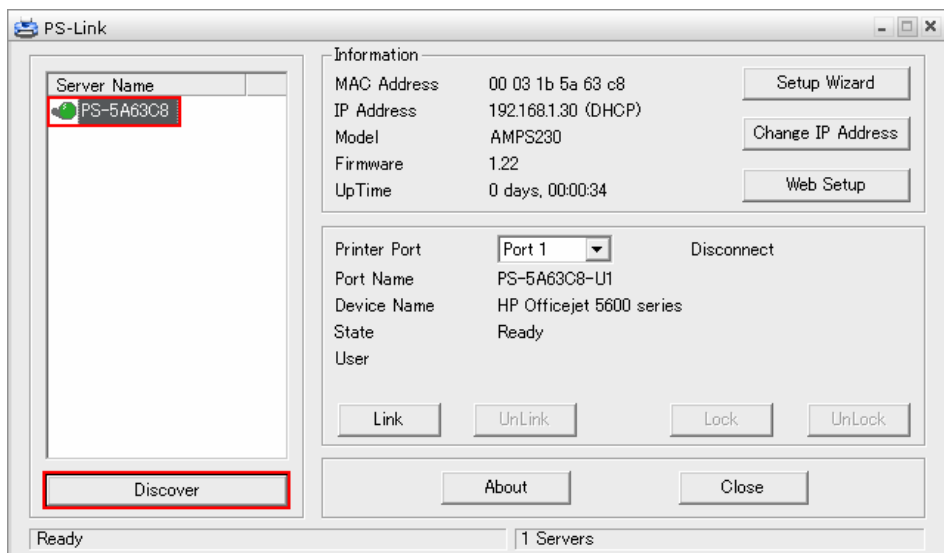
Adding the Printer to the Computer

Note: The following steps must be completed on **all computers** you plan to use with the print server.

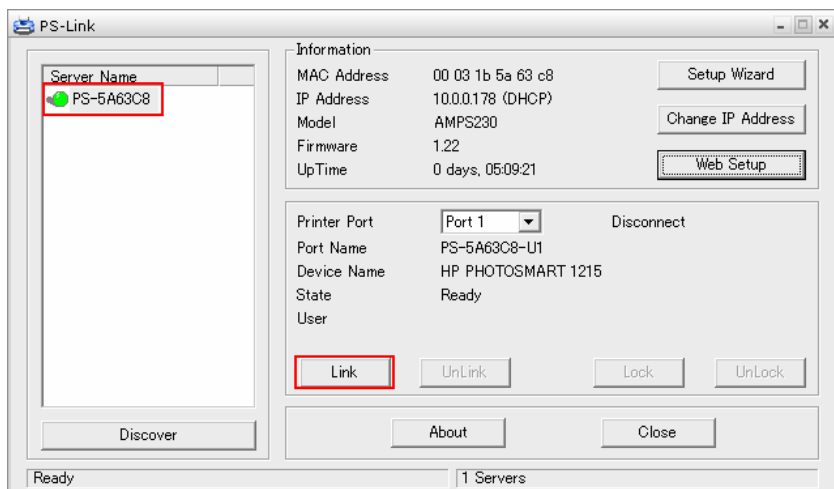
Step 1 Double click on the PS-Link icon in the system tray to open the PS-Link software.



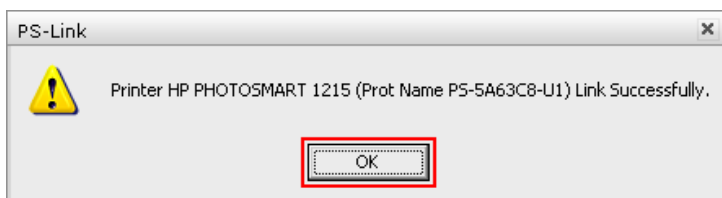
Step 2 Click the **Discover** button and your printer should show up under **Server Name**. If your print server does not show up, check all power and network cable connections to the printer. You may also need to disable any software firewalls you have on your computer.



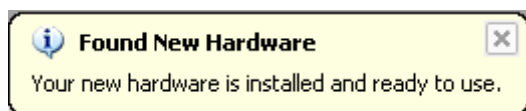
Step 3 Select your print server from the **Server Name** box and click the **Link** button.



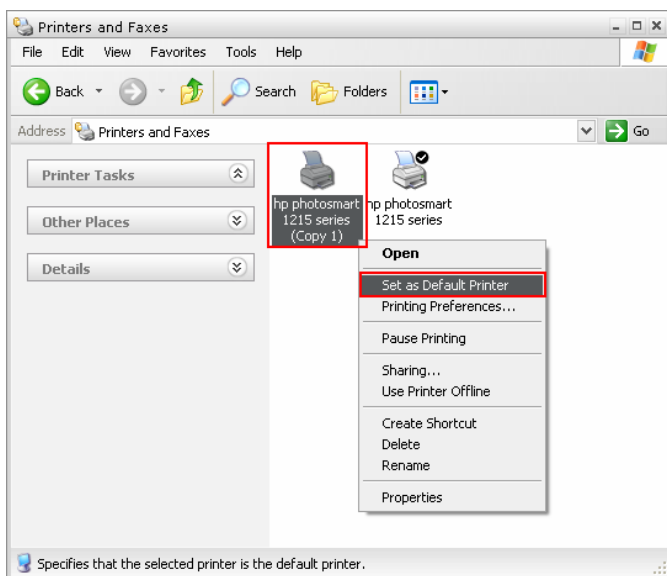
Step 4 Click **OK** at the **Link Successfully** screen. You will see notices appearing in the bottom right-hand corner of your screen while Windows configures the printer.



Step 5 Once you see a notice that says **Your new hardware is installed and ready to use**, go to **Start -> Control Panel** and double click on **Printers and Faxes** (**Vista users**: Click on **Printers** instead of **Printers and Faxes**)



Step 6 In **Printers and Faxes** (or **Printers**) you will see a copy of your printer. Right click on the copy and click **Set as Default Printer**.



Congratulations, the configuration is now complete. Remember to repeat all steps in **Section 4** on each of the computers you plan to use with the print server.

After installing the printer server on your computer(s), you might have to use the applications in Windows to scan instead of the original software from your printer manufacturer. For the instructions on how to scan via the printer server, you can refer to Section 4 of the User's Manual in the CD that came with the printer server.

Section 5

Technical Support

E-mail: support@airlink101.com

Toll Free: 1-888-746-3238

Website: www.airlink101.com

*Printer server may not support all printers. Go to the AirLink101 website to view the printer compatibility list

*Actual data throughput will vary. Network conditions and environmental factors lower actual data throughput rate. Specifications are subject to change without notice. All products and trademarks are the property of their respective owners. Copyright ©2007 AirLink101®